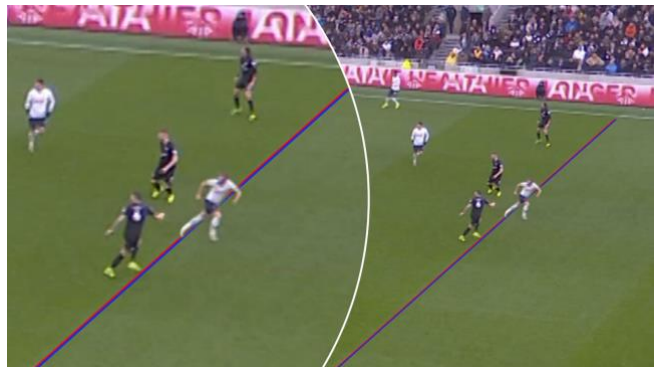




Bachelor's thesis/Master's thesis

"How biased is our memory of moving objects?"

Investigators: *Friedrich, Jannis*



An error in our visual system causes us, when seeing a moving object, to perceive it as being further along in its direction of motion. This affects decisions in many parts of life. For example, when making an offside call in soccer, a referee must locate the player's location and make a judgment whether this is behind or beyond the line of the last defending player. This error causes the location to be incorrectly remembered too far (i.e. "more offside").

In this thesis we want to see how the characteristics of the thing being seen, affect this error. This can be approached from a basic research perspective: How is our visual system affected by our beliefs? Or from an applied perspective: What characteristics cause a player to be wrongly called offside due to this visual error?

Conditions:

- ✓ Dependable
- ✓ Interest
- ✓ Dedicated
- ✓ Don't worry about prior knowledge

Contact:

Name: Jannis C. Friedrich
Room: 122 (IGVI)
Tel.: 0221 498 25724
Email: j.friedrich@dshs-koeln.de