

HUBER® 360

ASSESSMENT AND PROGRESS REPORT

A real patient follow-up tool adapted to your practice.
Guaranteed to be an easy-to-use time saver.

- Full Built in assessment
- 3 tests based on Romberg and Fukuda to measure and compare balance capacity
- 2 tests to measure area of stability and mobility restriction
- 2 tests to assess strength and coordination
- Test reports and patient progress report available
- Photo and video analysis tool
- Connect to the machine wirelessly and without a USB drive
- Send the assessment directly as a PDF to patients or prescribers
- Create your own programs and free menus
- HUBER® 360 Remote control
- Monitor patients' exercise remotely



Size:

L=1800mm
W= 1050mm (without guardrails)
W=1335mm (with guardrails)
H=2080mm

Weight: 274 kg (with guardrails)

Floor size:

1,90m² (without guardrails)
2,4 m² (with guardrails)

Power requirements:

230V / 50-60 Hz / 2 kVA
110V / 50-60Hz / 2kA

Maximum platform tilt: 10°

Maximum platform speed:

1 rev/s at 10° tilt

Maximum platform load: 150 kg

10.4" color screen

ref HUBER 360 MD 230V : 15-0011

ref HUBER 360 MD 110V : 15-0013

Delivered with:

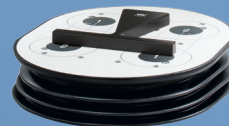
1 Samsung tablet, 1 Articulated Stool, 2 pads,
1 repositioning block, 2 protection hand rails



articulated stool



pads



repositioning block



Samsung Tablet

DJO Global | 1a Guildford Business Park | Guildford | Surrey | GU2 8XG | UNITED KINGDOM

www.DJOglobal.eu



HUBER[®] 360

Neuro Muscular Rehabilitation
and Assessment

Neuro Muscular Rehabilitation and Assessment

EXCLUSIVE *HUBER® 360* TECHNOLOGY

HUBER® 360 features the new Multiaxis Motorized Platform. It comes equipped with force sensors built into the platform and handles. Trained by a health professional, your patients will work safely on both physical and cognitive skills: that's Neuro Muscular Rehabilitation. Once mobility and flexibility have been recovered on HUBER® 360, patients can enroll into a Health Sport program in your center to maintain and improve their health.

MULTIAXIS MOTORIZED PLATFORM™ WITH BUILT-IN FORCE SENSORS



- Integrated functional assessment adapted to all patient types
- Dynamic Posture Corrector™ for a precise and progressive workout
- Multi-directional stimulation and targeted recruitment

SPECIFIC TRAJECTORIES FOR EACH THERAPEUTIC INDICATION



Circle Point Spiral



Seesaw Sun Dial Rosette Random



360° REHABILITATION

With HUBER® 360, the treatment is broken down into four movement fundamentals: Flexibility and Mobility, Dynamic Strengthening, Posture and Balance, and Resistance

Flexibility and Mobility

- The Dynamic Posture Corrector™ improves stretching precision
- The Multiaxis Motorized Platform™ mobilizes joints in every plane of motion



Dynamic Strengthening

- The Dynamic Posture Corrector™ insures proper positioning during exercise
- Feedback on the screen allows control of strength and direction for better recruitment



Posture and Balance

- The static and dynamic force platform improves objectification of posture
- Balancing games are both fun and challenging for the patient



Resistance

- Dynamic exercises adapted to the patient's physical condition increase their resistance
- Short-duration high-intensity activities for faster results

